

Geckos of the Wellington region

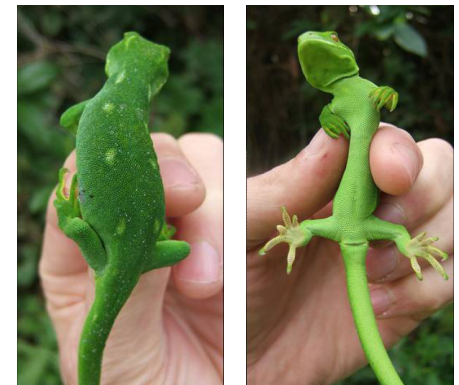
Forest Gecko



Common Gecko



Green Gecko



Wellington Region: Gecko Identification Card

| ID feature | Forest gecko <i>Mokopirirakau</i> 'southern North Island forest gecko' | Common gecko <i>Woodworthia maculata</i> | Green gecko <i>Naultinus punctatus</i> |
|---|---|---|--|
| Maximum SVL (snout-to-vent length) "Vent" = anal opening | 89mm | 82mm | 95mm |
| Scales on flat upper part of snout noticeably larger than body scales | No | No | Yes |
| Head | Thin dark V shape on head between the eyes; white bands from eye to ear; much white around mouth edges. | | |
| Inside mouth | Inside of mouth orange or yellow. Tongue yellow sometimes with a pink tip. | Inside of mouth and tongue whitish to pale pinkish. | Inside of mouth and tongue dark blue. |
| Back | Brightly coloured in grey, brown or reddish brown with lots of black and white and sometimes yellowish patches. Pattern is a series of large irregular blotches usually without stripes. | Mainly grey or brown with markings that may include patches of black, white, yellow orange and olive green. Irregular markings usually run across the body but some have longitudinal stripes. | Bright green. Often with yellow, white or pale green patches on either side along the edge of the back. |
| Underside or stomach | Blotched/mottled. | Pale usually unspotted. | Pale green. |
| Tail | Slender and able to grip well. | Thick and unable to grip well. Often regrown. | Slender and able to grip well. Seldom shed. |
| Toes | Narrow and tapering toes with expanded pads. | Broadly expanded pads. | Narrow and tapering toes with slightly expanded pads. |

References:

- Gill, B.J. & Whitaker, A.H. 2001. New Zealand frogs and reptiles. David Bateman Ltd. Auckland, NZ
- Towns, D.R. 1988. A field guide to the lizards of New Zealand. *New Zealand Wildlife Service Occasional Publication No. 7*
- Photos by Richard Romijn (unless otherwise stated)